

The eyes of the Lord
are on the _____.

To find the missing word, write the name of each picture.
The letters in the boxes spell your answer.

















Ages 7+

January 28, 2024 • Psalm 34:1-22

Praise to God for Help

In this psalm, David said, "I will extol the Lord
at all times; His praise will always be on my lips."

Connect the dots and read more of this psalm.



BETHANY
PRESBYTERIAN CHURCH

What else does this psalm say?

Unscramble the missing words.



_____ who _____ at _____
seTho kolo mHi

are _____; their _____ are
taniard cefas

_____ with _____.
enevr vredeoc mehsa

_____ and _____ that the _____ is
etasT ese rdoL

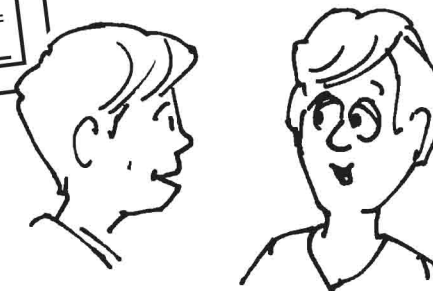
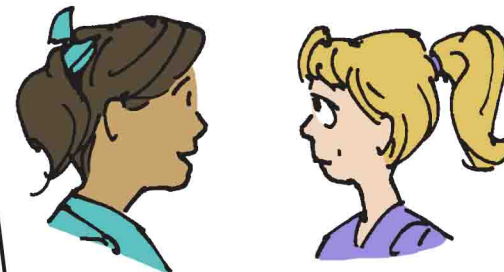
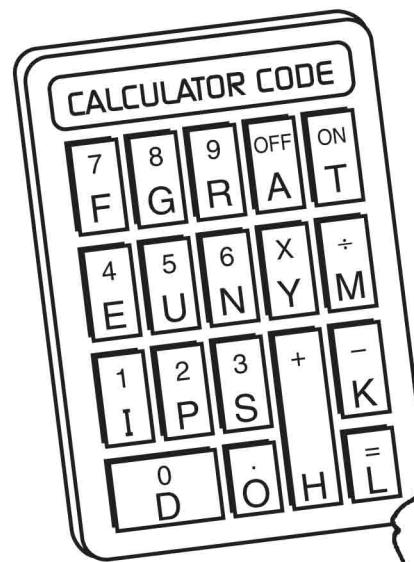
_____ are _____
dgoo slesedB hotes

who _____ refuge in _____.
keta iHm



What does this psalm tell us to do?

Use this calculator code to fill in the blanks.



_____ - 4 4 2 x . 5 9

ON . 6 8 5 4 7 9 . ÷

V
4 1 = OFF 6 0 x . 5 9

= 1 2 3 7 9 . ÷

3 2 4 OFF - 1 6 8 = 1 4 3